

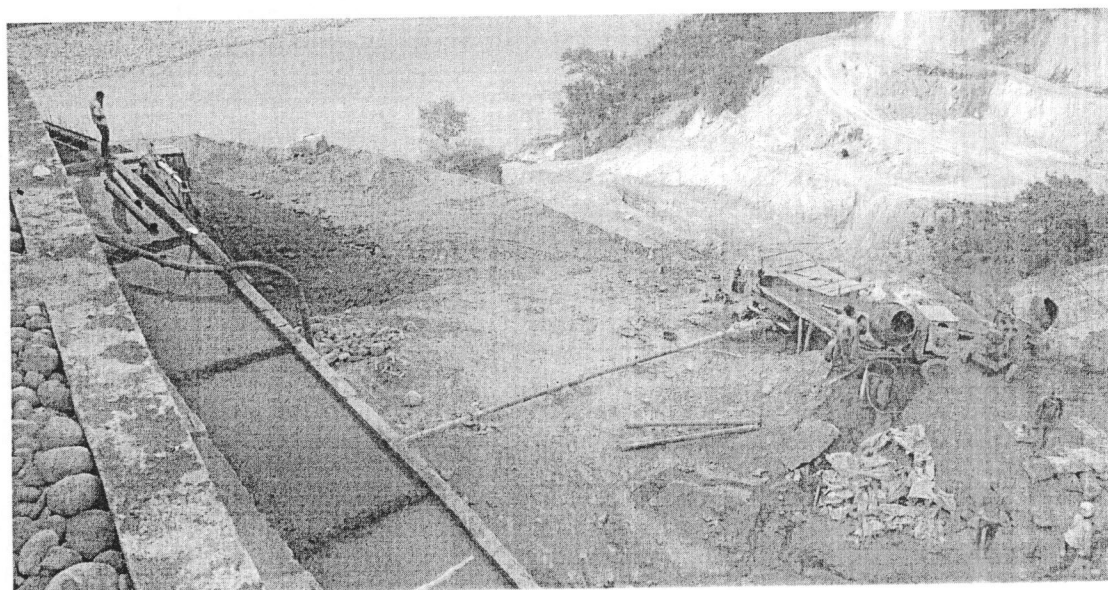
**Inspection Note recorded by Er. R.K. Kanwar,  
Engineer-in-Chief, IPH Department U.S. Club Shimla  
(HP) on dated 10.5.2015.**

**MIP Nadaun Area:-** The Medium irrigation Project to Nadaun Area was inspected along with Er. V.K.Dhatwalia Executive Engineer IPH Division Hamirpur, Er. Umesh Dogra Assistant Engineer IPH Sub-division Nadaun , Er. Ravinder Kumar Junior Engineer IPH Section Bara, Er. Pramodh Pathnia Junior engineer IPH Section Dangri, Er. Rajinder Singh Pathnia Junior Engineer, Section-III MIP Nadaun and the field staff of IPH Sub- Division Nadaun on 10.5.2015. Mr. Varun Kumar Singh (Manager-Jain Irrigation Systems Limited) along with his field staff was also present during the inspection and following observations were made :-

**i) Left Bank Area:-**

**HEAD WORKS:-** The site development work for head works is in progress. The excavation for the intake structure which is the most critical component is almost nearing completion. Katcha approach road to the head works has been constructed. Executive Engineer stated that the vetted structural design and drawings for intake structure and Pump House has been submitted by the executing firm M/S JISL during 1<sup>st</sup> week of May 2015 and is under scrutiny in the Circle Office. It was directed to expedite the work by putting adequate resources at site of work.

## Intake site at Left Bank



**RISING MAINS:-** MSERW Rising Mains in a length of **10468** Rmt of dia 350mm to 600mm are to be laid in different zones on the left Bank for which the total quantity of pipes has been procured at site. The work of laying and jointing has been taken in hand as about 870 rmt pipes were jointed so far at site as reported by the Assistant Engineer IPH Sub- Division Nadaun. It was suggested to expedite the

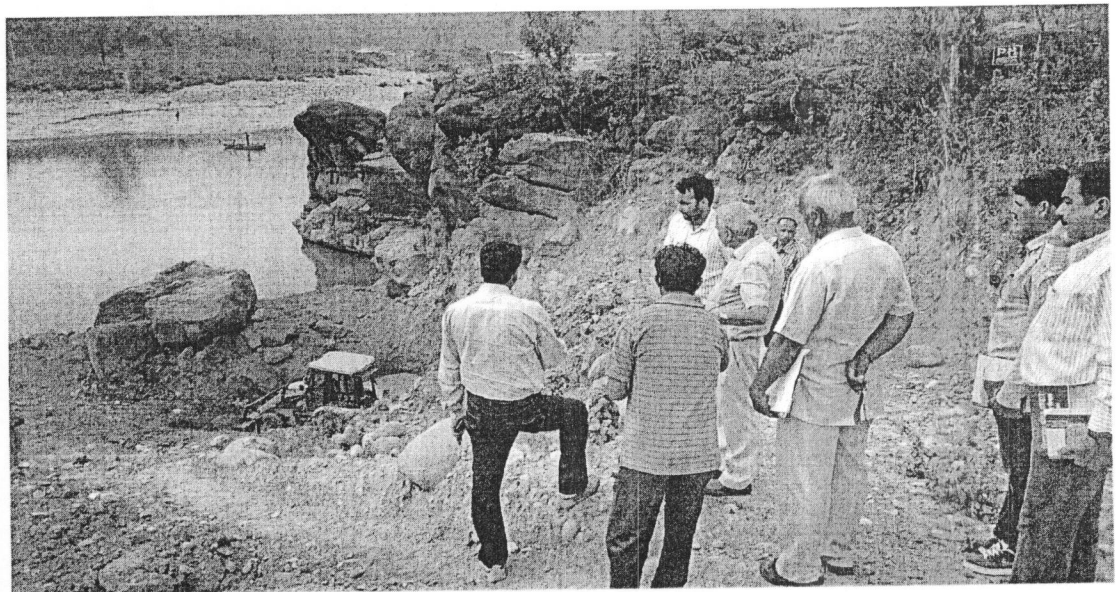
work of laying of Rising Mains as the Agricultural fields are free after harvesting season.

**GRAVITY MAINS:-** The Gravity mains in a length of **15757** Rmt of dia 250mm to 800mm HDPE pipes are to be laid on left bank out of which 3500 meters have been laid so far as reported by the Executive Engineer. The work needs to be expedited during the ensuing summers to achieve the maximum progress in the harvested fields.

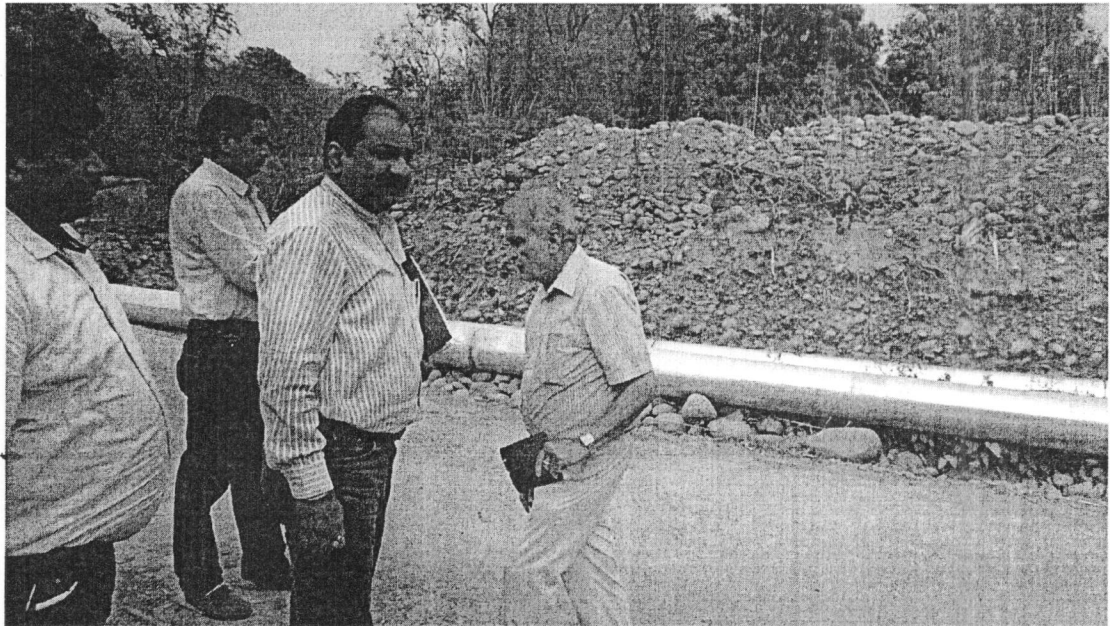
## **ii) Right Bank Area:-**

**HEAD WORKS:-** The work on the head works is in progress. The structural design and drawings for intake structure have been approved and issued to the Executing firm. The excavation for the intake, the most critical component, has been completed to the tune of 60% and the same is in progress for other components like desilting tanks, sump well and pump house. The vetted structural design and drawings for deliting tanks, sump well and pump house is under scrutiny in Circle office.

**Intake site at Right Bank**



**RISING MAINS:-** MSERW Rising Mains in a length of 6252 Rmt of dia 300mm to 350mm, are to be laid in different zones on the Right Bank for which the total quantity of pipes has been procured at site. The work of laying and jointing has been taken in hand as about 400 rmt pipes has been laid so far at site as reported by the Assistant Engineer IPH Sub- Division Nadaun. It was suggested to expedite the work of laying of Rising Mains as the Agricultural fields are free after harvesting season.



**GRAVITY MAINS:-** The Gravity mains in a length of 3569 of dia 400mm to 630mm HDPE pipes are to be laid on the Right bank out of which 3300 meters have been laid. Laying of balance pipes has been hindered due to forest land for which complete case has been submitted online and the approval is awaited as yet as reported by the Executive Engineer.

**DISTRIBUTION NETWORK:-**

The survey and redesigning of distribution network alongwith CAD & WM Works on the Right Bank has been completed by M/S JISL and

actual execution of the same is shortly being taken up as confirmed by Sh. Varun Kumar Singh, Manager JISL. It was directed to execute the distribution network simultaneously for pari-pasu implementation of the project as a whole.


SOP:-

Executive Engineer intimated that an estimate amounting to Rs. 2439.00 lac for SOP to MIP Nadaun was received during 2012-13 from HPSEBL against which Rs. 1200.00 lac were deposited with Xen HPSEBL Nadaun. The work, however, is yet to be commenced by the HPSEBL.

**Land diversion under FCA:-** Executive Engineer stated that total 3.28 ha of forest land is required to be diverted in favour of IPH Department out of which "approval in principal" for 1.75 ha has been accorded. Later due to technical reasons, 1.52 ha of additional forest land was required for the project for which complete case stands submitted online for which the approval is awaited as yet. Due to part approval the work of the project in some reaches remains hindered. Directions were issued to take up the matter with the forest department for early approval of the FCA case as a whole.

It was emphasized again that the participation of KVS must be ensured during the laying of rising mains, gravity mains, distribution network and CAD & WM Works and their suggestion must be incorporated during execution. It was also directed to hold regular meetings with the KVS at the level of Executive Engineer, Superintending Engineer and Chief Engineer on monthly, bi-monthly and quarterly basis respectively so as to minimize disputes during the execution.

Executive Engineer stated that an independent sub-Division is inevitably required to be opened with at-least four sections for facilitating the speedy execution of the project for which the justification already stands submitted. The matter is being taken up with the Govt.

  
(R.K.Kanwar)  
Engineer-in-Chief  
IPH Department,  
U.S. Club, Shimla-1

No. IPH-ENC-Inspection Note/15- 932-37

Dated 19-5-2015

Copy forwarded to:

1. The Additional Chief Secretary (IPH) to the Govt. of H.P Shimla-2 for information please.
2. The Chief Engineer (H/Z) IPH Department, Hamirpur for information and necessary action.
3. The Chief Engineer (D&M), Jal Bhawan, Shimla-9 for information and necessary action.
4. The Superintending Engineer, I&PH Circle, Hamirpur for information and necessary action.
5. The Executive Engineer, IPH Division Hamirpur for information and necessary action.
6. Guard file.

  
(R.K.Kanwar)  
Engineer-in-Chief  
IPH Department,  
U.S. Club, Shimla-1